

Green, healthy and fair

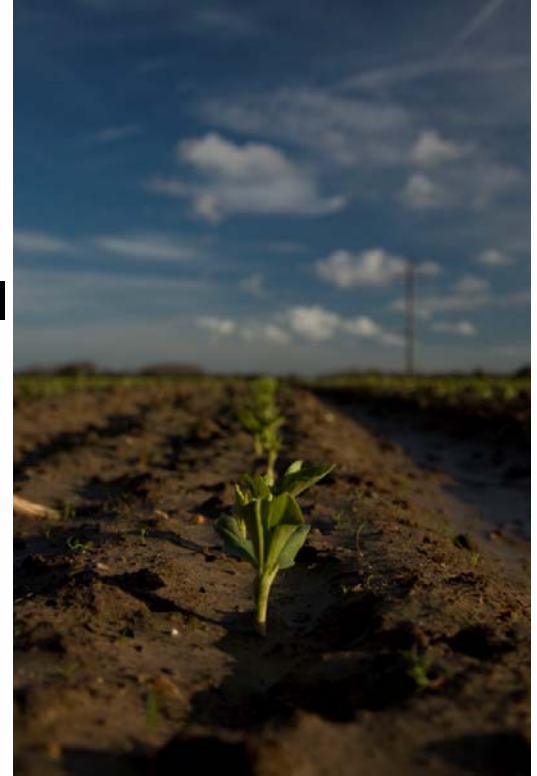
Sue Dibb, Sustainable Development Commission



Corporate Climate Response 21 May 2008

SDC's role

- SDC is the Government's independent advisor and watchdog on sustainable development – working across the UK
- Through advocacy, advice and appraisal we aim to put sustainable development at the heart of Government policy
- This is the third of our thematic reviews, as part of our Watchdog role



Scope of the review

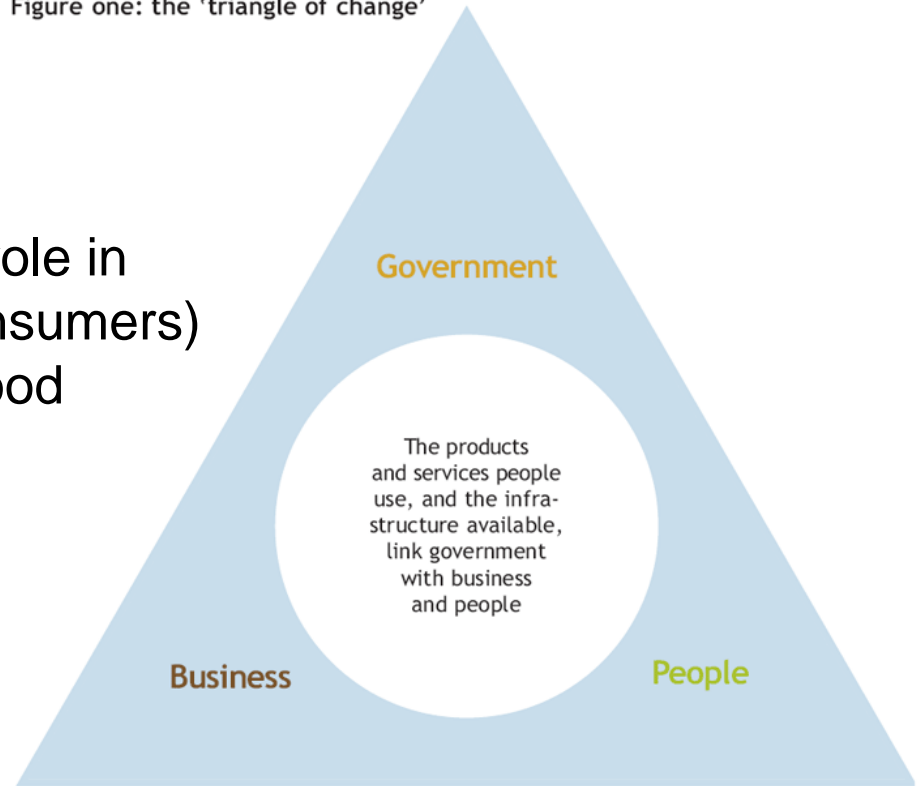
- Review government and retailer initiatives towards a sustainable food system.
- Why food? Linked to tough challenges: climate change, waste, obesity, global poverty.
- Why supermarkets? Have powerful role to play to develop solutions
- Why government? Enabler of change.



Approach: 'Triangle of change' – *I will if you will*

Figure one: the 'triangle of change'

- Focus on government's role in enabling retailers (and consumers) to support a sustainable food system



Key findings

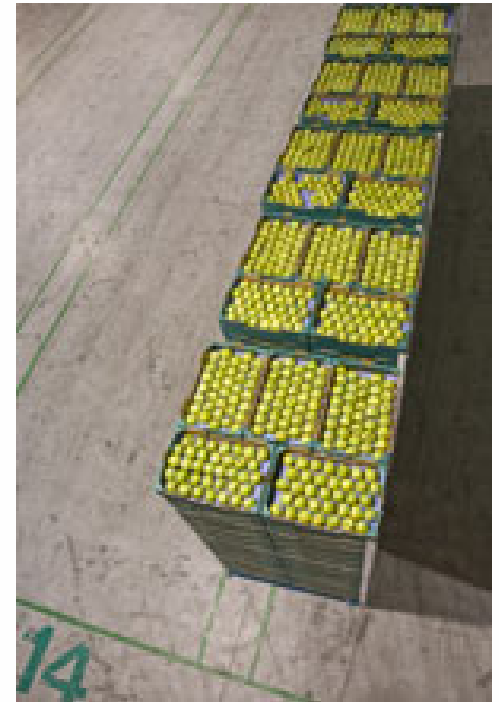
- **Delivering government targets**
Government cannot meet targets on health, waste, climate change and fair trade without **harnessing the power** of supermarkets
- **Retailers say they are willing to work with government**
Our research found frustration at the lack of long-term vision/ strategy.
- **Leadership role for Government**
 - to create a vision and develop a roadmap for a sustainable food system
 - to develop the evidence base
 - to catalyse change



Priority areas

SDC identifies 6 priority areas for action:

- Climate change
- Waste
- Water
- Ecosystems
- Nutrition & obesity
- Fair supply chains



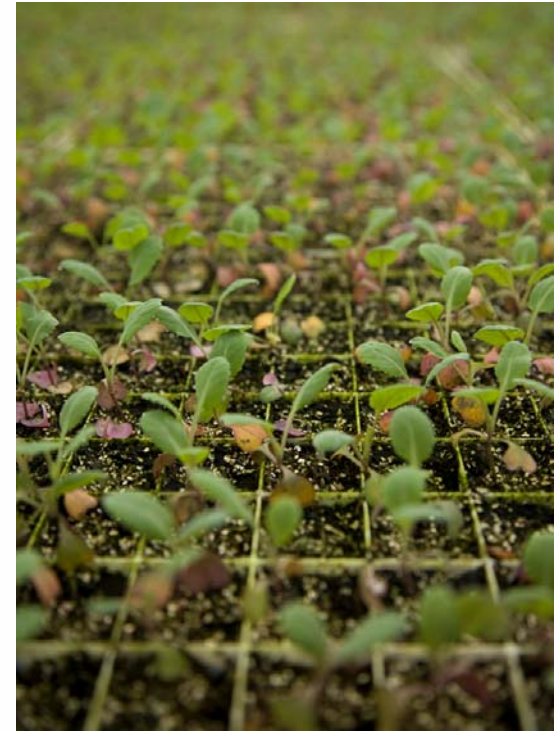
Climate change

- Climate change top of food policy agenda
- Lack of clarity of how high level CC commitments translate to retail specific priorities
- Govt policies fragmented and gaps
- Agriculture/supply chains/ consumers?



Recommendations

- **2020 strategic plan for GHG reductions for food system**
- **Solutions to food and agricultural waste (eg anaerobic digestion)**
- **Refrigeration: alternatives to HFCs**
- **Local transport policies**
- **Better understanding of GHG impacts of intensive/organic agriculture; local; seasonal food**
- **Footprinting & choice editing to support behaviour change**



Contact details

Sue Dibb, Team Leader, Sustainable
Consumption and Business

sue.dibb@sd-commission.gsi.gov.uk

Green, Healthy & Fair:

www.sd-commission.org.uk

